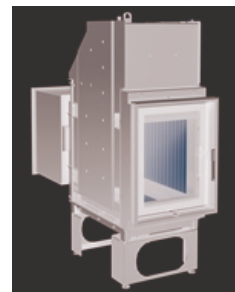




## Appliances properties: LEDA Werk GmbH & Co. KG - TURMA H80 XL W HL (mit Heizkasten)

### Master data

<b>Date of entry</b>	Jun 11, 2018
<b>Manufacturer</b>	LEDA Werk GmbH & Co. KG
<b>Model</b>	TURMA H80 XL W HL (mit Heizkasten)
<b>Nominal heat output [kW]</b>	17
<b>Declared nominal space heating output [kW]</b>	9
<b>Nominal water heating output [kW]</b>	8
<b>Water operating pressure [bar]</b>	2.5
<b>Continuous burning appliance</b>	—
<b>Type test standard</b>	DIN EN 13229
<b>Year of testing</b>	2016
<b>Test laboratory</b>	RRF Rhein-Ruhr-Feuerstättenprüfstelle GmbH
<b>Number of test laboratory</b>	2
<b>Number of test report</b>	RRF - 29 16 4394



### Flue gas values

	Wood
<b>Flue gas mass flow [g/s]</b>	16.7
<b>Flue gas mass flow [g/s]</b>	165
<b>Necessary flue draught [Pa]</b>	12

### Further important characteristics of the appliance

**Suitability for installation to a shared flue<sup>1)</sup>**



**Connectivity to the central heating system**



**General technical approval for room sealed operation**



<sup>1)</sup> For unsealed operation it is possible to install the appliances to a shared flue system (please see installation manual).

On behalf of the manufacturer, the HKI Industrieverband e.V. hereby confirms compliance with the respective requirements\* in accordance with 1.BImSchV. The type test report of the fireplace has been submitted to the HKI Industrieverband e.V.

\* A green check mark with a „1“ indicates that the requirements of the 1st BImSchV are fulfilled, a green check mark with a „2“ indicates that the 2nd level of the 1st BImSchV is fulfilled. A yellow check mark shows that the transitional regulation of the 1st BImSchV is fulfilled and a red line means that the 1st BImSchV is not fulfilled.

## Evaluation of emission data and efficiency Wood

Norm : Inset appliances (with closed firedoor)	Evaluation
D - 1.BImSchV	 Stufe 2
A - Austrian regulation referred to Art 15a B-VG	 2015
CH - Swiss clean air act	
DK - Danish regulation for air pollution from wood burners	
F - Crédit d'impôt à la transition énergétique	 7★

## Evaluation of emission data and efficiency Lignite briquettes

Norm : Inset appliances (with closed firedoor)	Evaluation
D - 1.BImSchV	!

-   
Stufe 2 Compliant with the requirements of the 2nd stage of the 1.BImSchV (only for Germany)
-   
Stufe 1 Compliant with the requirements of the 1st stage of the 1.BImSchV (only for Germany)
-   
2015 Compliant with the requirements of the Austrian Agreement pursuant to Art. 15a B-VG from 2015 (applies only to Austria)
-   
7★ Compliant with the requirements for the „Crédit d'impôt“ promotion in France, the fireplace complies with the classification 7\* of the Flamme Verte Label
-   
6★ Compliant with the requirements for the „Crédit d'impôt“ promotion in France, the fireplace complies with the classification 6\* of the Flamme Verte Label
-   
5★ Compliant with the requirements for the „Crédit d'impôt“ promotion in France, the fireplace complies with the classification 5\* of the Flamme Verte Label
-   
★ Compliant with the requirements of the 1 star stage in Italy.
-   
★★ Compliant with the requirements of the 2 star stage in Italy.
-   
★★★ Compliant with the requirements of the 3 star stage in Italy.
-   
★★★★ Compliant with the requirements of the 4 star stage in Italy.
-   
★★★★★ Compliant with the requirements of the 5 star stage in Italy.
-  Fulfils the requirements
-  Complies with requirements of the transition ruling (1.BImSchV)
-  Requirements are not fulfilled
-  No information/unknown
-  No measuring values are available for this fuel, operation with this fuel is not permitted

No symbol means that there are no requirements.

Here you will find further information